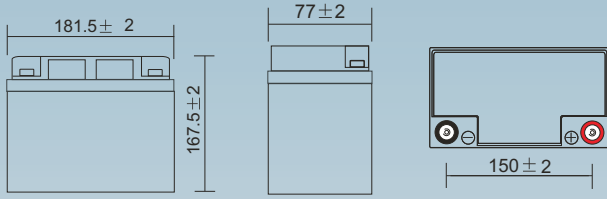


## PS Range

(5yr Design Life in Float Service at 20°C)

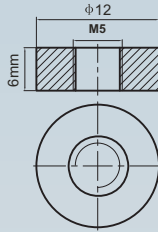
### Dimensions (mm)



### Standard terminal (mm)

#### T12 Terminal

Threaded insert 5mm Stud

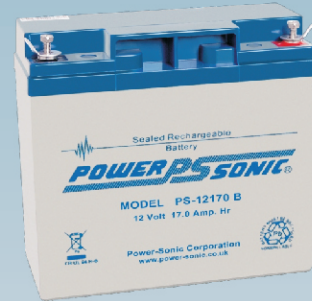


Torque: 2.0 - 3.0 Nm

### Physical Specification

Nominal Voltage		12V
Nominal Capacity		17.0AH
Dimension	Length	181.5 ± 2 mm
	Width	77 ± 2 mm
	Container Height	167.5 ± 2 mm
	Total Height (with terminal)	167.5 ± 2 mm
Weight		Approx 5.7kg
Standard Terminal		T12
Case and Cover Material		ABS (UL94-HB)

## PS-12170 12V 17AH



### Operating Temperature Range

Storage (In fully charged condition)	- 20°C to + 60°C
Charge	- 15°C to + 50°C
Discharge	- 20°C to + 60°C

### Container and Lid Material /Flammability Rating

ABS UL94-HB or UL94-V0 Option

### Discharge Characteristics (25°C, 77°F)

Rated Capacity	20hr Rate(1.80V/cell)	17.0AH	Constant Voltage Charge	Cycle	Initial Charging Current Less than 4.5A Voltage 14.40V ~ 15.0V at 25°C (77°F)
	10hr Rate(1.80V/cell)	16.0AH			
Capacity Affected by Temperature	5hr Rate(1.75V/cell)	14.2AH	Standby	Recommended Charge Current less than 4.5A Voltage 13.5V ~ 13.8V at 25°C (77°F)	
	3hr Rate(1.75V/cell)	12.48AH			
	1hr Rate(1.60V/cell)	9.76AH			
	40°C (104°F)	103%			
	25°C (77°F)	100%			
	0°C (32°F)	86%			

### Internal Resistance mΩ

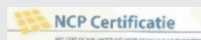
16.0 mΩ

### Constant Current Discharge (Amperes) at 25°C (77°F)

F.V/Time	15min	20min	30min	45min	1h	2h	3h	4h	5h	8h	10h	20h
1.85V/cell	18.3	15.2	11.8	9.36	7.57	4.96	3.72	3.05	2.58	1.80	1.53	0.81
1.80V/cell	20.3	16.7	12.7	9.94	7.98	5.28	3.93	3.20	2.71	1.89	1.60	0.85
1.75V/cell	22.5	18.3	13.7	10.6	8.61	5.53	4.16	3.34	2.85	1.95	1.63	0.86
1.70V/cell	24.6	20.0	15.1	11.1	9.09	5.83	4.35	3.48	2.96	2.02	1.69	0.87
1.65V/cell	26.0	21.1	15.9	11.8	9.41	6.03	4.51	3.60	3.03	2.07	1.72	0.90
1.60V/cell	28.6	22.9	16.9	12.2	9.76	6.28	4.66	3.71	3.13	2.13	1.76	0.92

### Constant Power Discharge (Watts/cell) at 25°C (77°F)

F.V/Time	15min	20min	30min	45min	1h	2h	3h	4h	5h	8h	10h	20h
1.85V/cell	34.5	29.0	22.7	18.2	14.8	9.74	7.33	6.02	5.11	3.59	3.06	1.63
1.80V/cell	37.8	31.4	24.2	19.1	15.5	10.3	7.68	6.28	5.33	3.76	3.19	1.68
1.75V/cell	41.4	34.1	25.8	20.3	16.6	10.7	8.11	6.53	5.59	3.86	3.26	1.71
1.70V/cell	44.6	36.9	28.2	21.1	17.5	11.3	8.46	6.80	5.81	4.00	3.36	1.74
1.65V/cell	47.0	38.8	29.6	22.3	18.0	11.6	8.75	7.02	5.92	4.10	3.43	1.78
1.60V/cell	50.5	41.5	31.1	22.9	18.5	12.0	8.99	7.21	6.10	4.20	3.50	1.82



Power-Sonic Europe Limited  
 3 Buckingham Square, Wickford, Essex, SS11 8YQ  
 Tel: +44 (0)1268 560686 Fax: +44 (0)1268 560902  
 sales@power-sonic.co.uk  
 www.power-sonic.co.uk